




CITYSIDE
STOUFFVILLE

MKEC-2
ELEV. A
2677 sq. ft.



OVER 60 YEARS OF EXCELLENCE

CITYSIDELIVING.CA


CITYSIDE
STOUFFVILLE

MKEC-2
ELEV. A
2677 sq. ft.

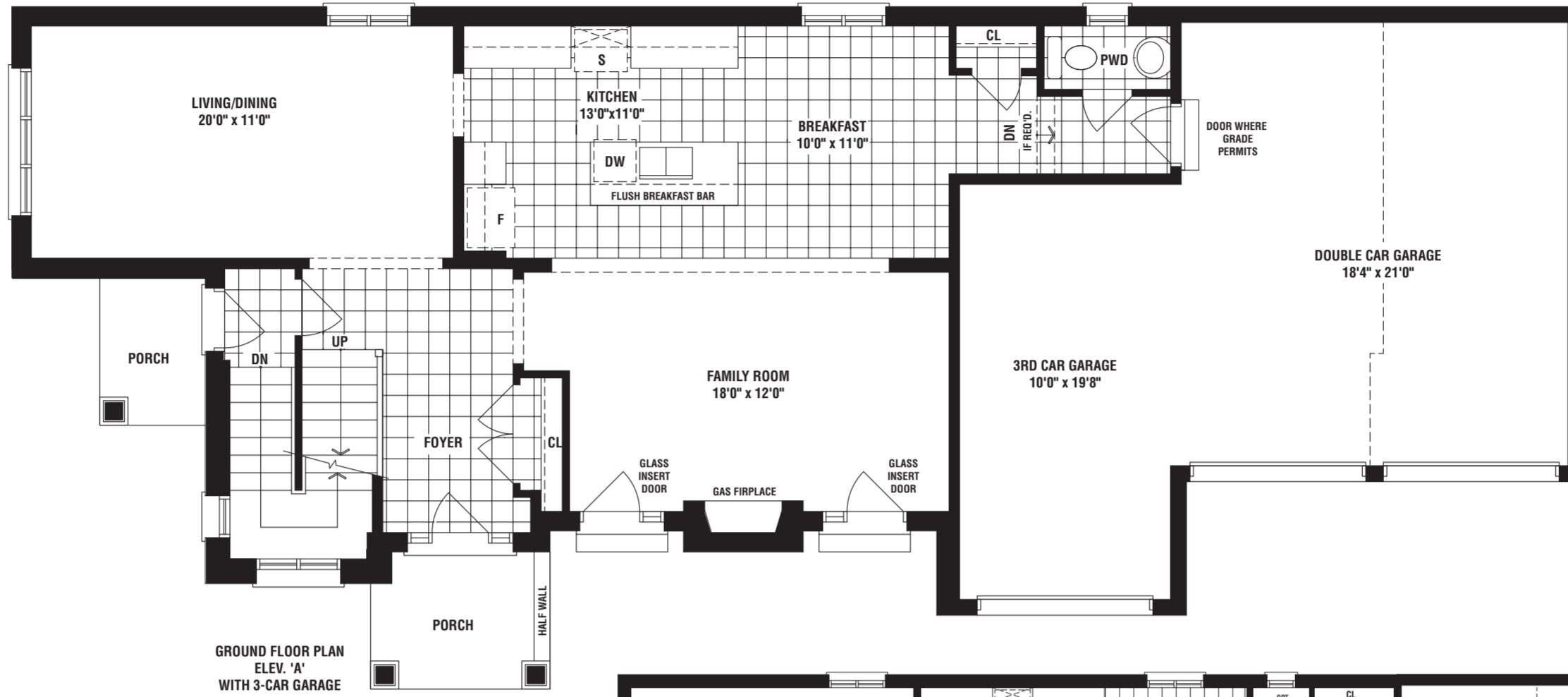


OVER 60 YEARS OF EXCELLENCE

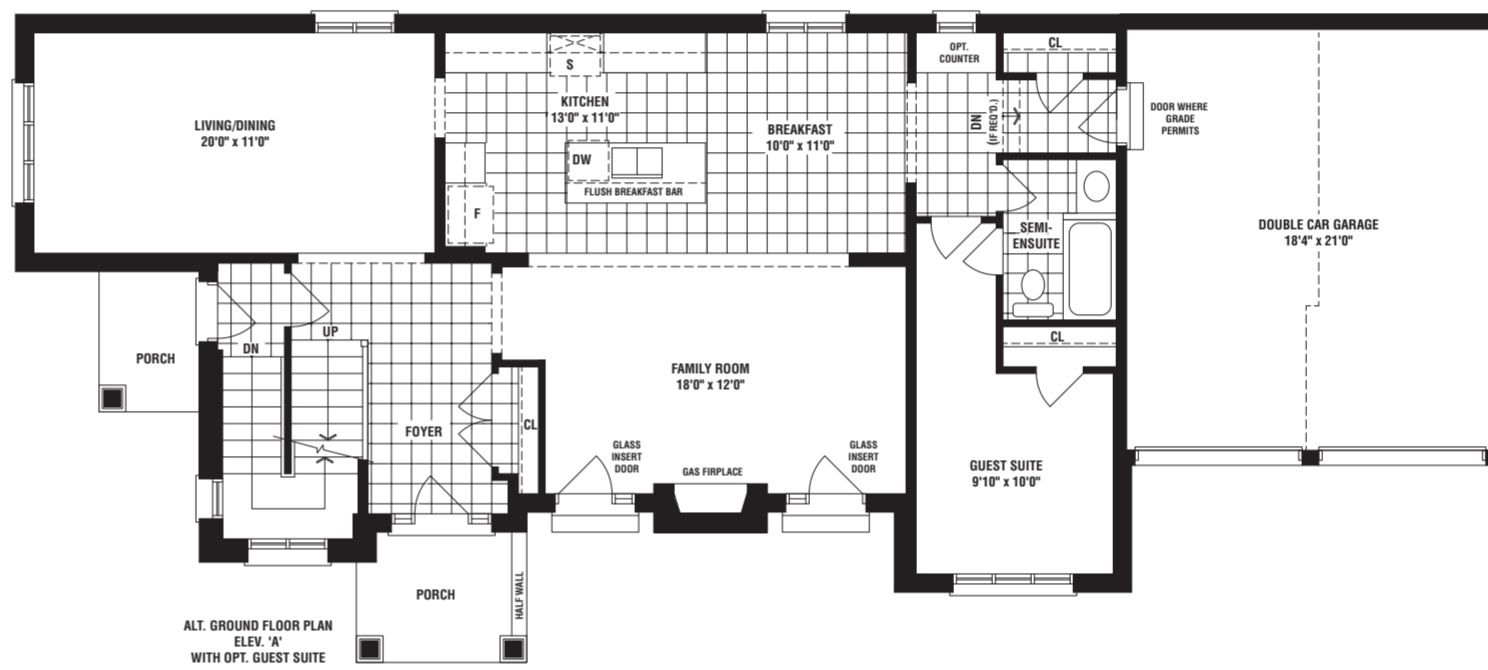
CITYSIDELIVING.CA

MKEC-2

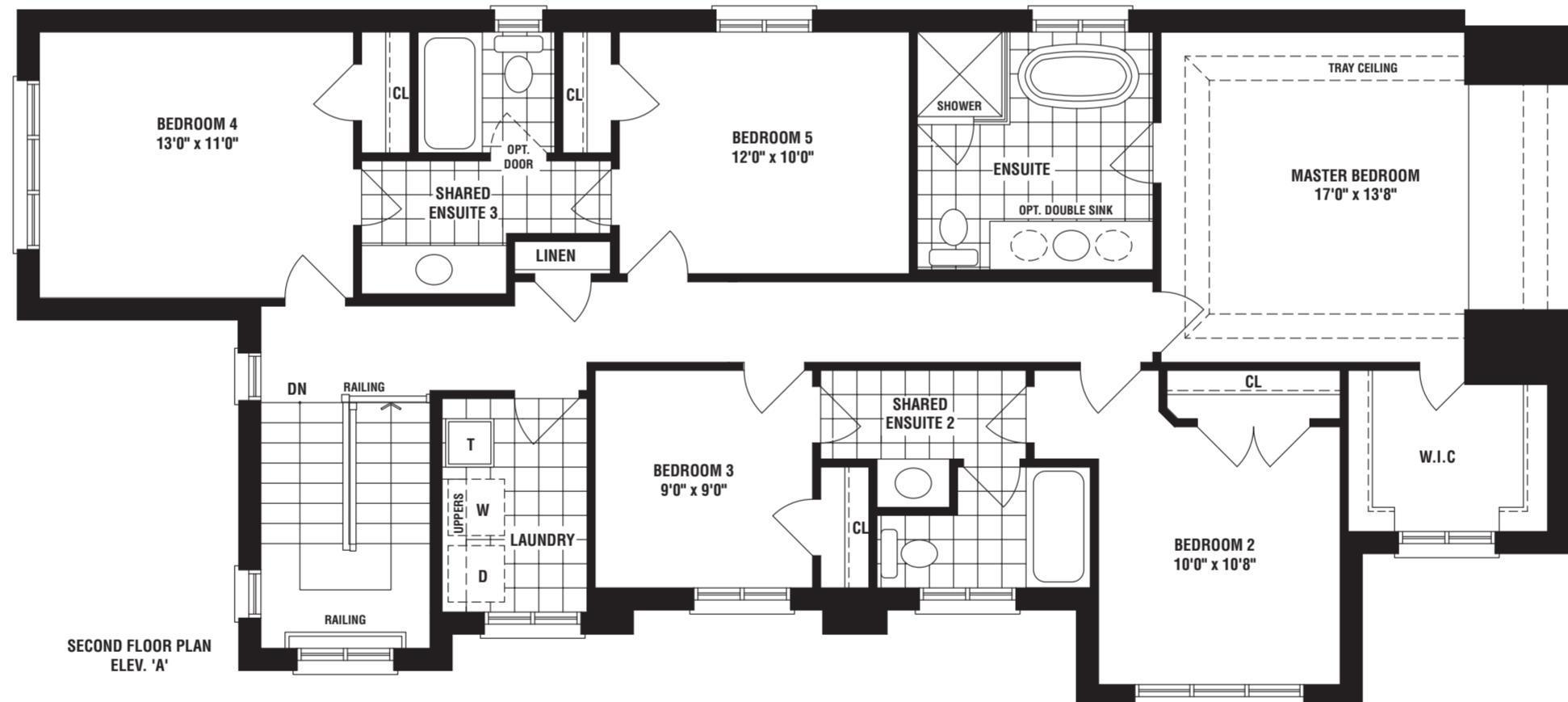
ELEV. A 2677 sq. ft.



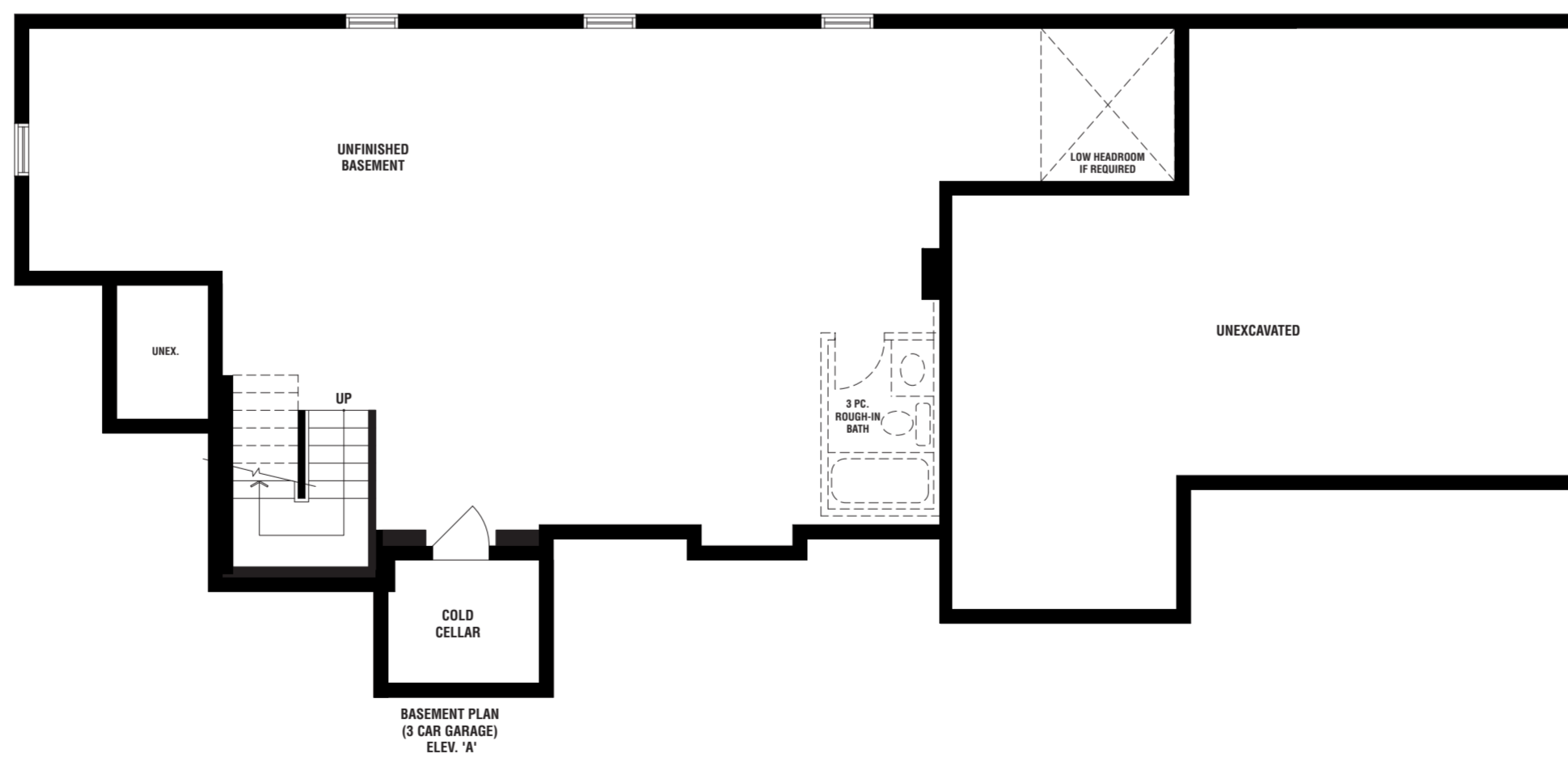
GROUND FLOOR PLAN
ELEV. 'A'
WITH 3-CAR GARAGE



ALT. GROUND FLOOR PLAN
ELEV. 'A'
WITH OPT. GUEST SUITE



SECOND FLOOR PLAN
ELEV. 'A'



BASEMENT PLAN
(3 CAR GARAGE)
ELEV. 'A'



The floorplans and elevations shown, dimensions, specifications and architectural detailing are pre-construction plans and may be revised or improved as necessitated by architectural controls and the construction process. All dimensions are approximate. Actual usable floor space may vary from the stated area. House may be reversed and purchaser agrees to accept same. Specifications subject to change without notice. Steps may vary at any exterior entrance. Illustrations are Artist's concept. Exterior railings on plans only as required by grade. E. & O.E. MKEC-2, 10/20