

3061 Sq. Ft.

OVER 60 YEARS OF EXCELLENCE

Rosedale Elev. B



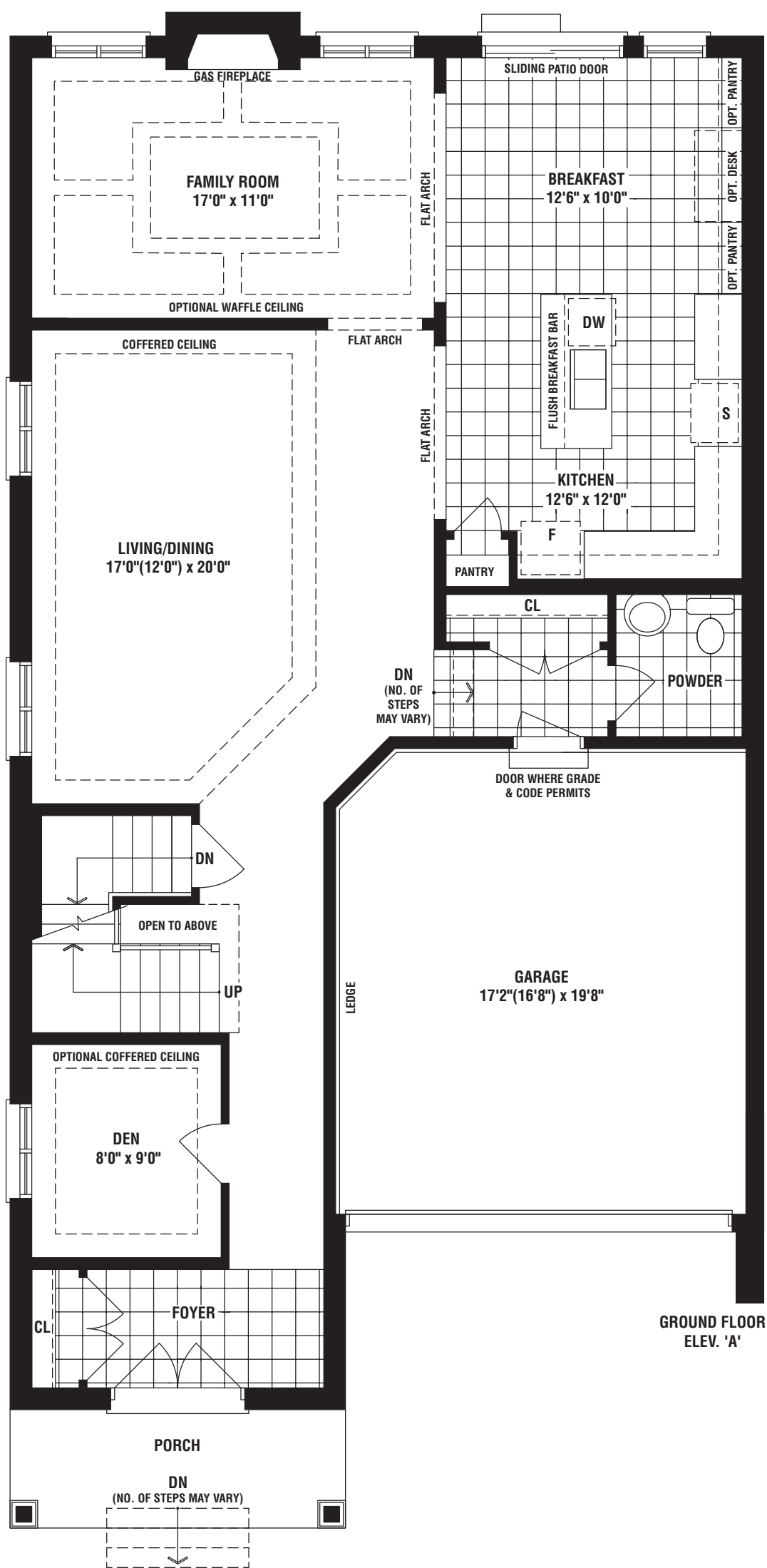
OVER 60 YEARS OF EXCELLENCE

Rosedale Elev. A

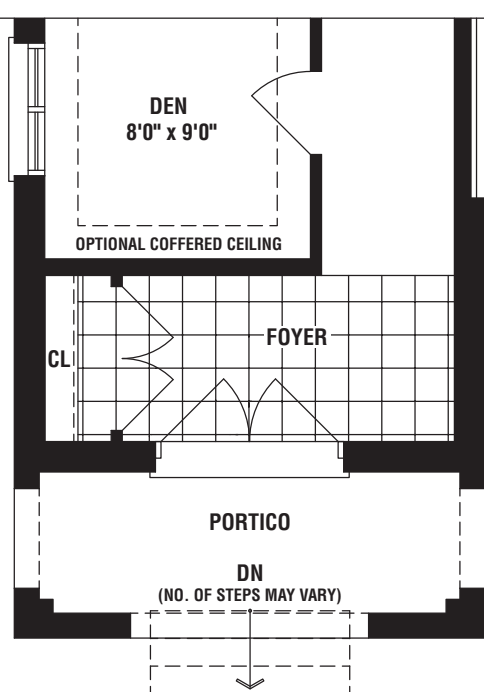
3037 Sq. Ft.



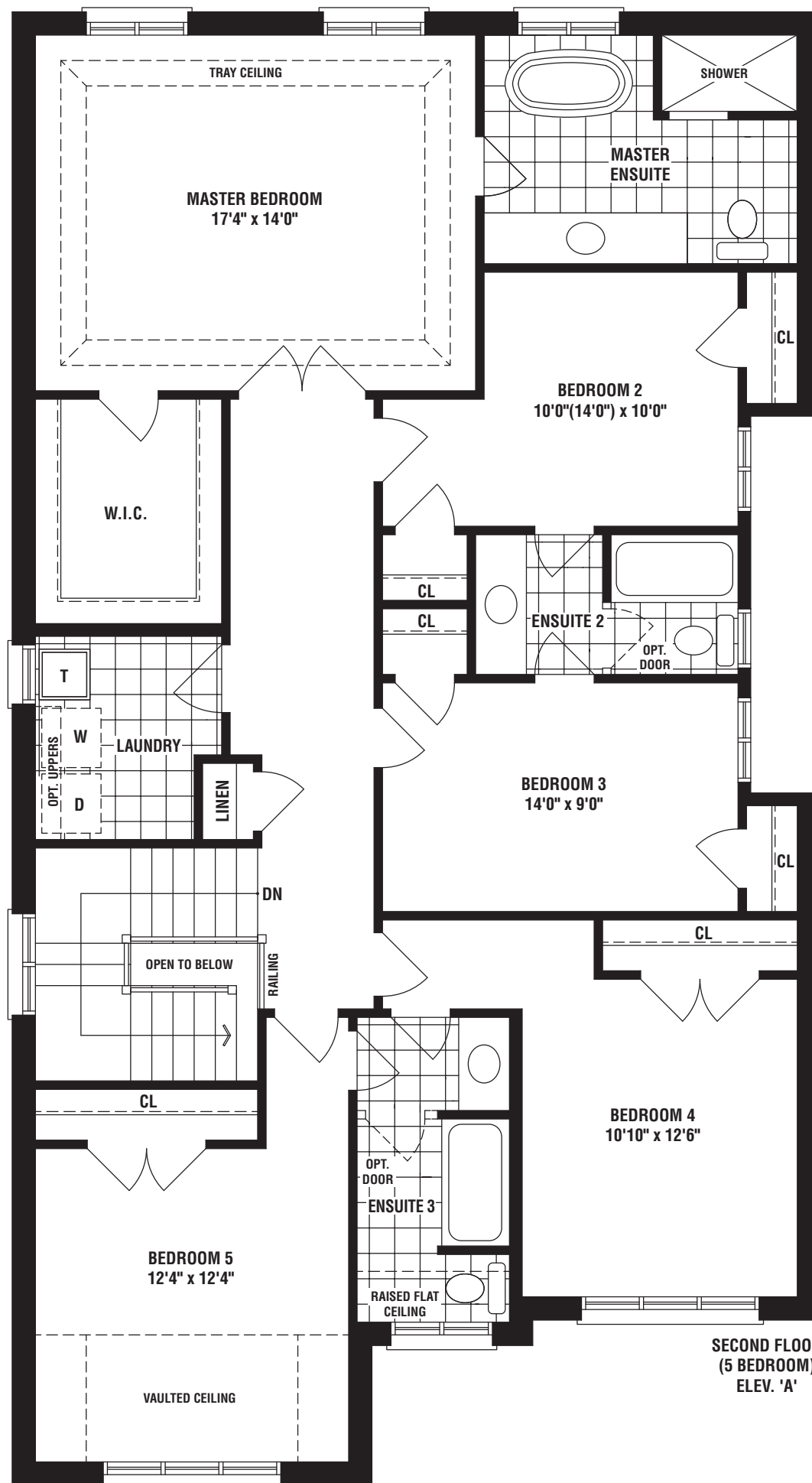
OVER 60 YEARS OF EXCELLENCE



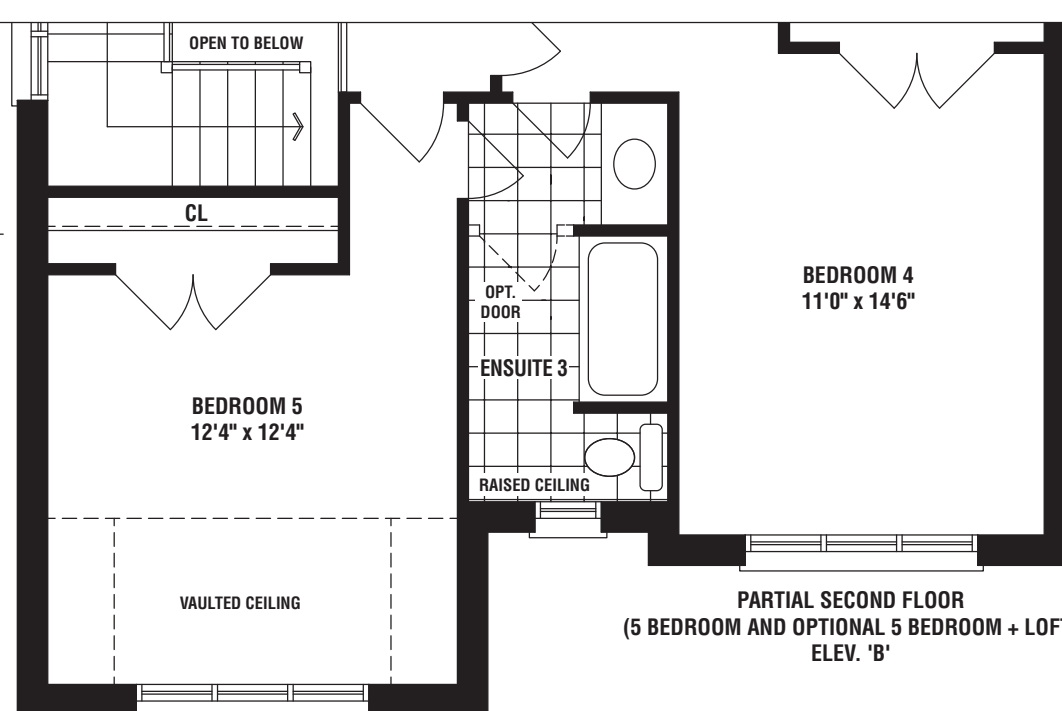
GROUND FLOOR
ELEV. 'A'



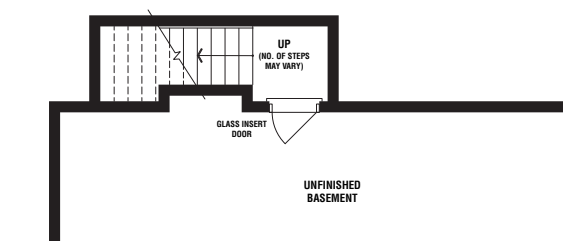
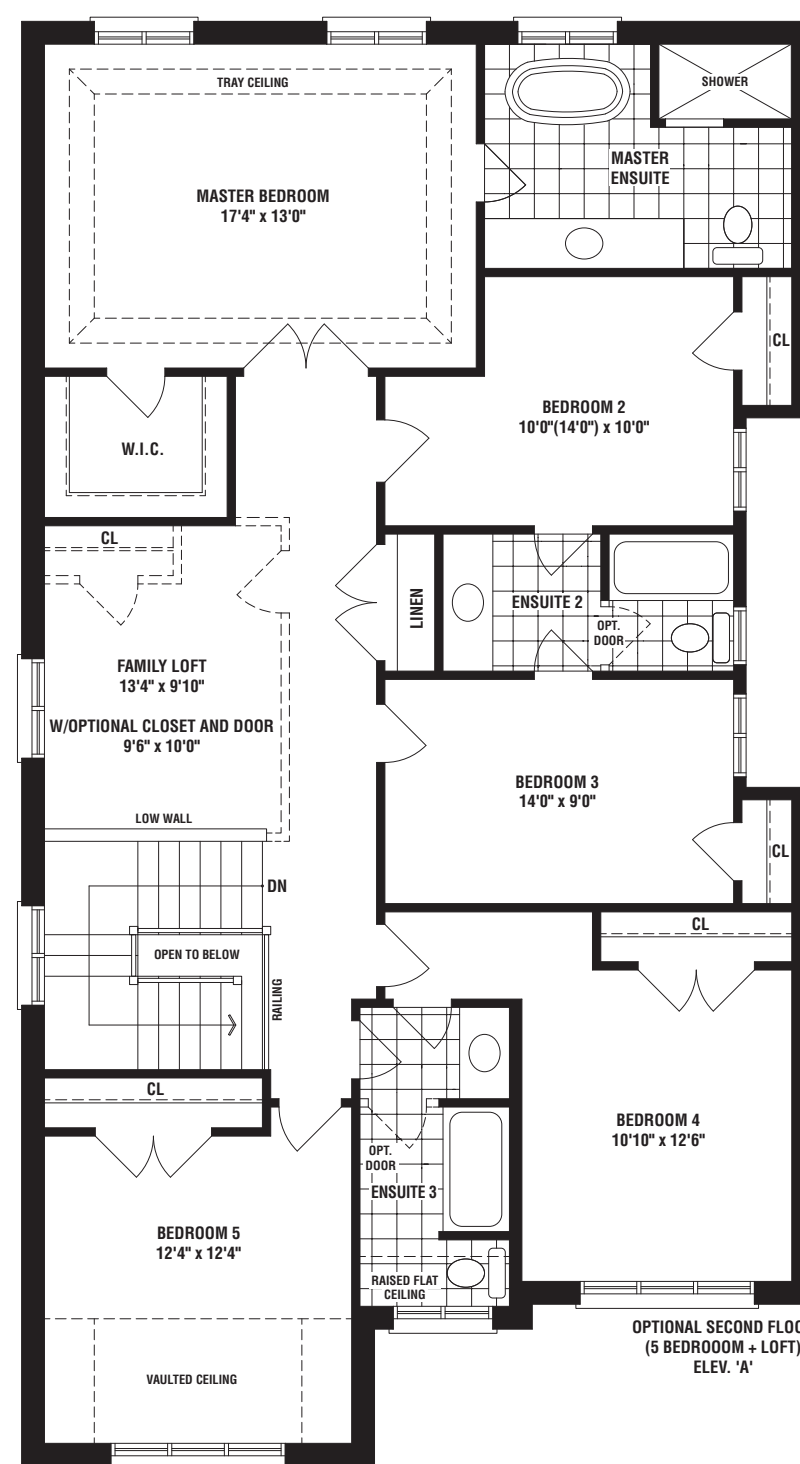
PARTIAL GROUND FLOOR
ELEV. 'B'



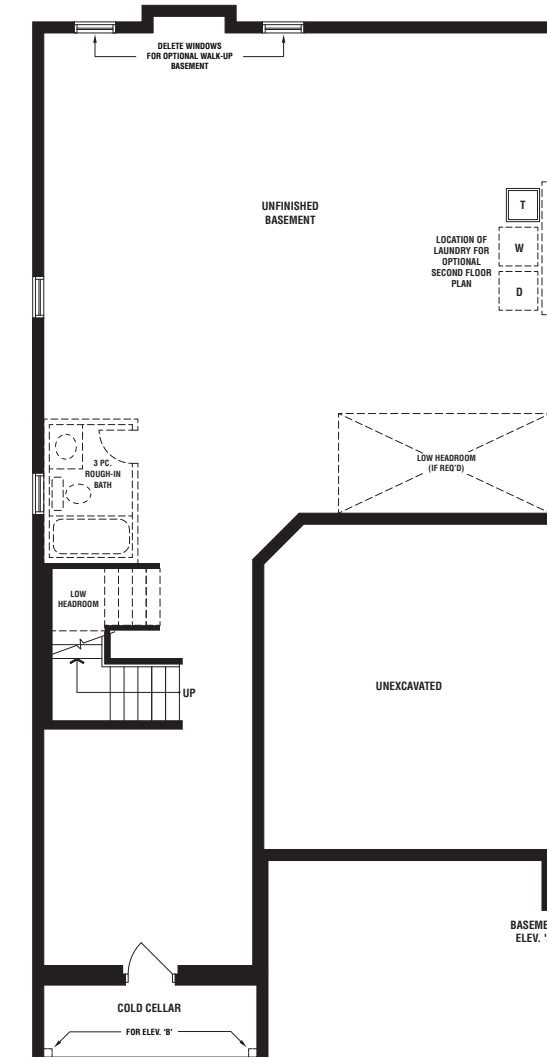
SECOND FLOOR
ELEV. 'A'



PARTIAL SECOND FLOOR
(5 BEDROOM AND OPTIONAL 5 BEDROOM + LOFT)
ELEV. 'B'



PARTIAL OPTIONAL WALK-UP BASEMENT
(IF GRADE PERMITS)
ELEV. 'A' & 'B'



BASEMENT
ELEV. 'B'

Rosedale

3037 / 3061 sq. ft.

Elev. A

Elev. B

The floorplans and elevations shown, dimensions, specifications and architectural detailing are pre-construction plans and may be revised or improved as necessitated by architectural controls and the construction process. All dimensions are approximate. Actual usable floor space may vary from the stated area. House may be reversed and purchaser agrees to accept same. Specifications subject to change without notice. Steps may vary at any exterior entrance. Illustrations are Artist's concept. Exterior railings on plans only as required by grade. E. & O.E.